

Weight limit 265 lbs

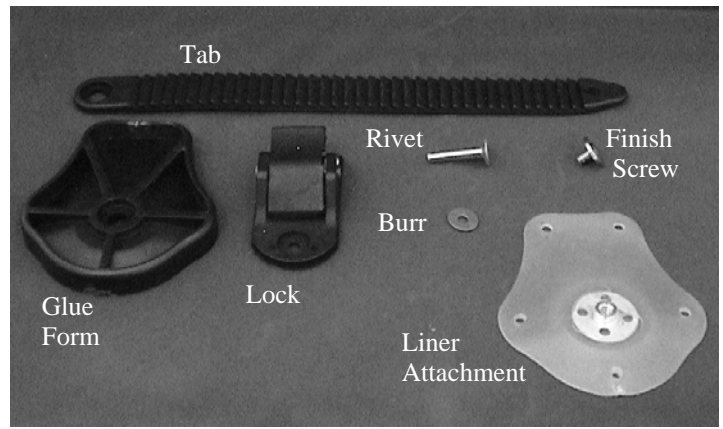
# CD101M Summit™ Lock With Manta



Customer Service  
(800) 819-5980 or (208) 429-0026  
www.coyotedesign.com

CE Coyote Design & Mfg. Inc.  
7450 W Lemhi Street, Boise, ID 83709

MADE IN USA



## Fabrication for AK placement of Summit™ Lock with Manta

Correct fabrication of the Summit™ Lock with Manta requires use of Coyote® Quick Adhesive. The Quick Adhesive sets extremely fast. If not glued fast enough it may not properly adhere to the liner. The glue can be refrigerated to increase the work time.

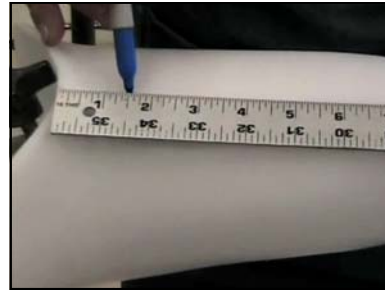
When using, work quickly.

The Quick Adhesive is sold separately.

CD4120—20cc cartridge

CD4180—180cc Cartridge

\* CD4180 requires a dispensing gun and mix tips



Once you have fabricated your socket measure 1 1/2 " below the medial brim and mark location.



Transfer that measurement to the lateral anterior side of the socket. Make a horizontal line at the height of that measurement.



Draw a vertical line down the lateral anterior side, intersecting the horizontal line.



At the intersection drill a 3/4" hole.



Taper the inside proximal edge and the outside distal edge of hole to help ease engagement.



Make sure not to widen the hole more than necessary.



Set the lock in place approximately 1/4" below the hole. Mark the socket through the hole in the lock.



Drill a 5/32" hole at your mark for the attachment of the lock.



Attach lock with rivet and burr.



The lock is complete.

## Gluing Manta Attachment to Liner



Have the patient step into socket. Mark the liner at top edge of the hole in the socket.



Roll liner over a piece of plastic to pre-stretch the liner and to create a flat working surface.



Measure 1/2" above mark on liner. This mark represents the bottom of the Manta attachment.



Attach liner attachment to the glue form with the finish screw.



Clean the back of the liner attachment with acetone.



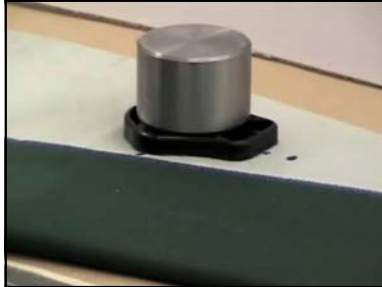
Mark around the liner attachment to ensure exact placement.



Working quickly, run a bead of Quick Adhesive around the edge of the liner attachment. Smear the bead into a thin layer on the attachment.



Set liner attachment in marked location.



Place a small weight on top of the glue form to hold in place. Allow to set for 15 minutes.



Remove the glue form and secure the tab to the liner attachment with the finish screw. Use Loctite® 242 to ensure permanent attachment.

## BK Placement of Summit™ Lock with Manta

The liner attachment is located anterior lateral between the fib head and the tibial tubercle. Make sure the liner attachment is far enough below the brim to remain compressed within the socket. After drilling the hole, have the patient step into the test socket; mark the liner at the top of the hole. The bottom of the manta liner attachment will be at that mark.

